

Fiche femelle Série VW 1.5mm - 3 pôles - 35 pcs

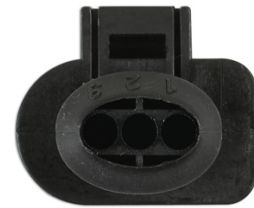
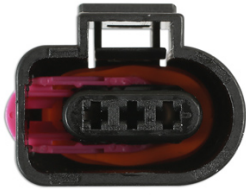
Sensors can be used in any area of the vehicle. Mainly used in the engine bay to protect circuits and important sensors for the engine management system. Sensors are protected by the waterproof seal supplied which is crimped onto the non-insulated terminal. Please use our range of Laser Professional Hand Tools part numbers -7293, 7002, 6547, 3932, 3984 & 4027.



Additional Information

- Connecteur Série Volkswagen 1.5
- Equivalent au code constructeur 1J0973703.
- Convient pour les câbles électriques de 0.35 -0.5mm²
- Cosses de remplacement disponibles sous la ref 37375 - Joints d'étanchéité gris étanches disponibles sous la ref 37376
- Le kit contient 35 pcs : 5 fiches femelles, 15 cosses et 15 joints d'étanchéité

<http://product/37366>



Related Tools



Connector & Terminal Removal Kit | 7293

- Application: VW Group (Audi, Seat, Skoda, Volkswagen) vehicles.
- For use on MAF sensor, coil pack, headlight, fog light, level sensor and most terminal blocks on VAG vehicles.
- Designed for use on most push and pull style connectors.
- Also for releasing terminals junior and micro connectors.
- Ideal for use with the following Connect consumable products: Part Nos. 37361 - 37395 or Assorted Boxes, Part Nos. 37396 - 37399.